

THE PROBLEM WITH SPICE

ITS USE AND ABUSE IN CUSTODY - A CONSULTATION WITH PRISONERS

684 prisoners surveyed (users and non-users), 120 focus group participants, in 9 prisons

SPICE N.

Also known as 'black mamba' is a class B synthetic cannabinoid drug, that is much stronger than cannabis.

REASONS FOR SPICE USE



EXISTING HABIT

"I DON'T TAKE ANY OTHER DRUGS EXCEPT CANNABIS, AND I SMOKED IT FOR 25 YEARS. SO WHEN I CAME INSIDE, IT WAS VERY EASY, THAT WAS THE REPLACEMENT FOR IT, IT WAS SPICE"



SELF MEDICATION

"IT MADE ME CHILL, AND STOPPED ME FEELING DEPRESSED AND SUICIDAL, SO THAT'S A GOOD THING INNIT"



COPING STRATEGY

"THEY LOVE WHAT IT DOES TO THEM AS THEY'RE IN A LOT OF MENTAL PAIN INSIDE IT TAKES THEM AWAY FOR A WHILE TO STOP THE PAIN"



BOREDOM

"YOU'RE BANGED UP FOR 23 HOURS SO YOU TAKE IT TO GET OUT YOUR HEAD CAUSE NOTHING ELSE TO OFFER SUPPORT"

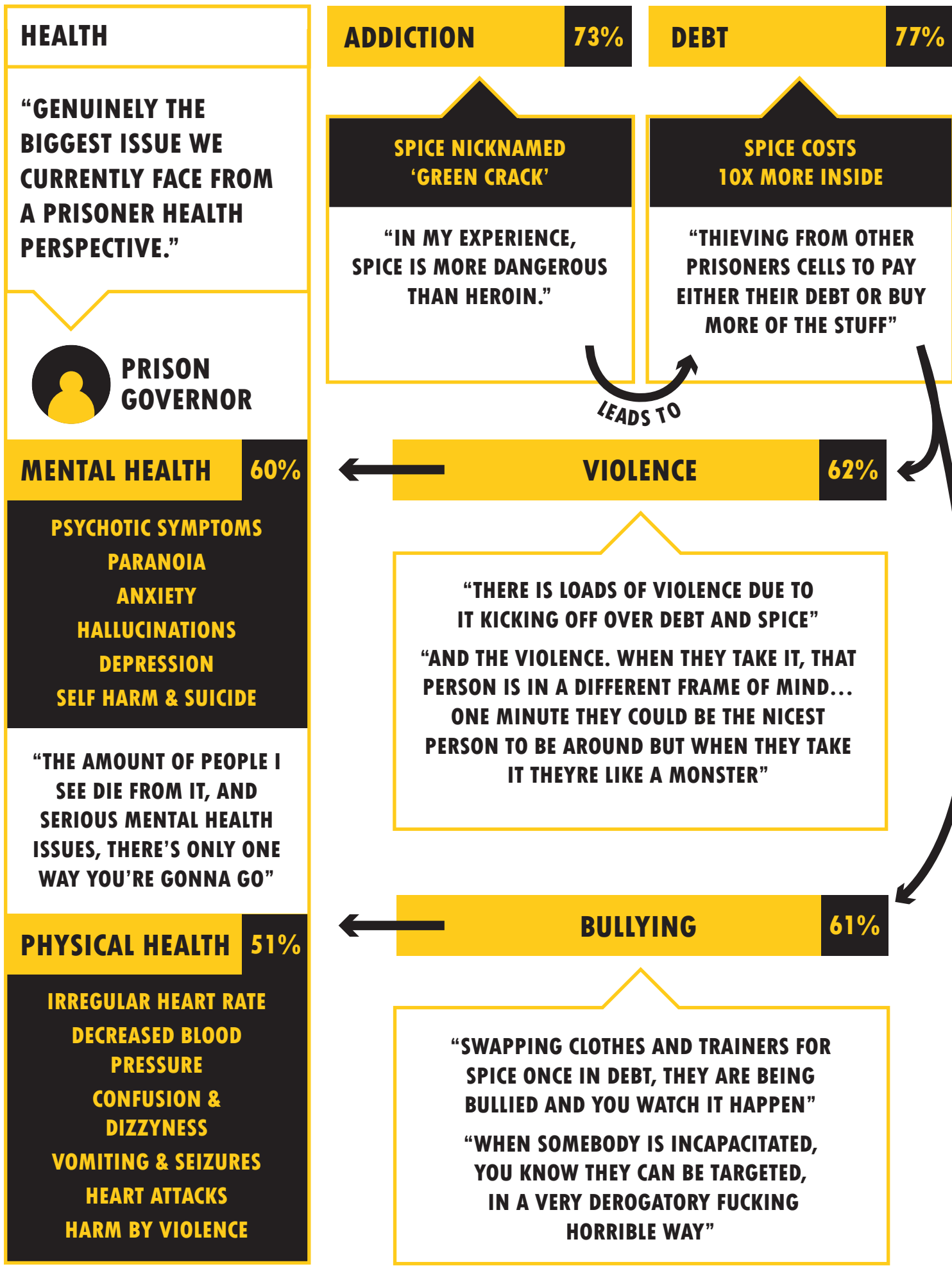


ENJOYMENT

"I JUST SAT THERE LIKE THAT BUZZING FOR A LITTLE WHILE AND THEN YOU LET IT WEAR OFF AND IT'S LOVELY. I DON'T KNOW I CAN'T EXPLAIN IT"

NEGATIVE CONSEQUENCES

- PERCENTAGES REPORTED BY CURRENT PRISONERS -



"SELLING ALL THEIR CANTEN FOR ONE EVENING'S SMOKE; GETTING INTO DEBT, MAKING THEMSELVES ILL, PHYSICALLY, MENTALLY, DESTROYING THEIR HEALTH, BEING BULLIED FOR BEING IN DEBT..."

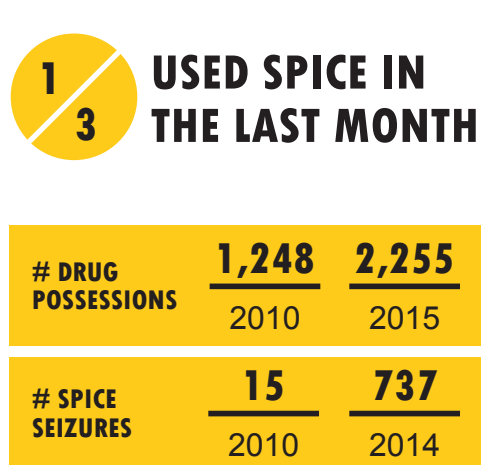
WHY IS IT A PROBLEM IN PRISON NOW?



STAFF & PRISONER STRESS LEVELS HIGH



USE OF DRUGS



TRAINING

"I THINK THEY NEED A TRAINING DAY, SO THEY CAN CATCH UP WITH WHAT'S GOING ON IN THE JAIL."

FINANCIAL INCENTIVES FOR DEALERS

"QUICK PROFIT OF £900 IF THEY'RE SELLING AT £1000"

WHY IS IT THE MOST POPULAR DRUG INSIDE?



UNDETECTED BY DRUG TESTS



AVAILABILITY



NUMBS THE MIND



LIKE CANNABIS

RECOMMENDATIONS

